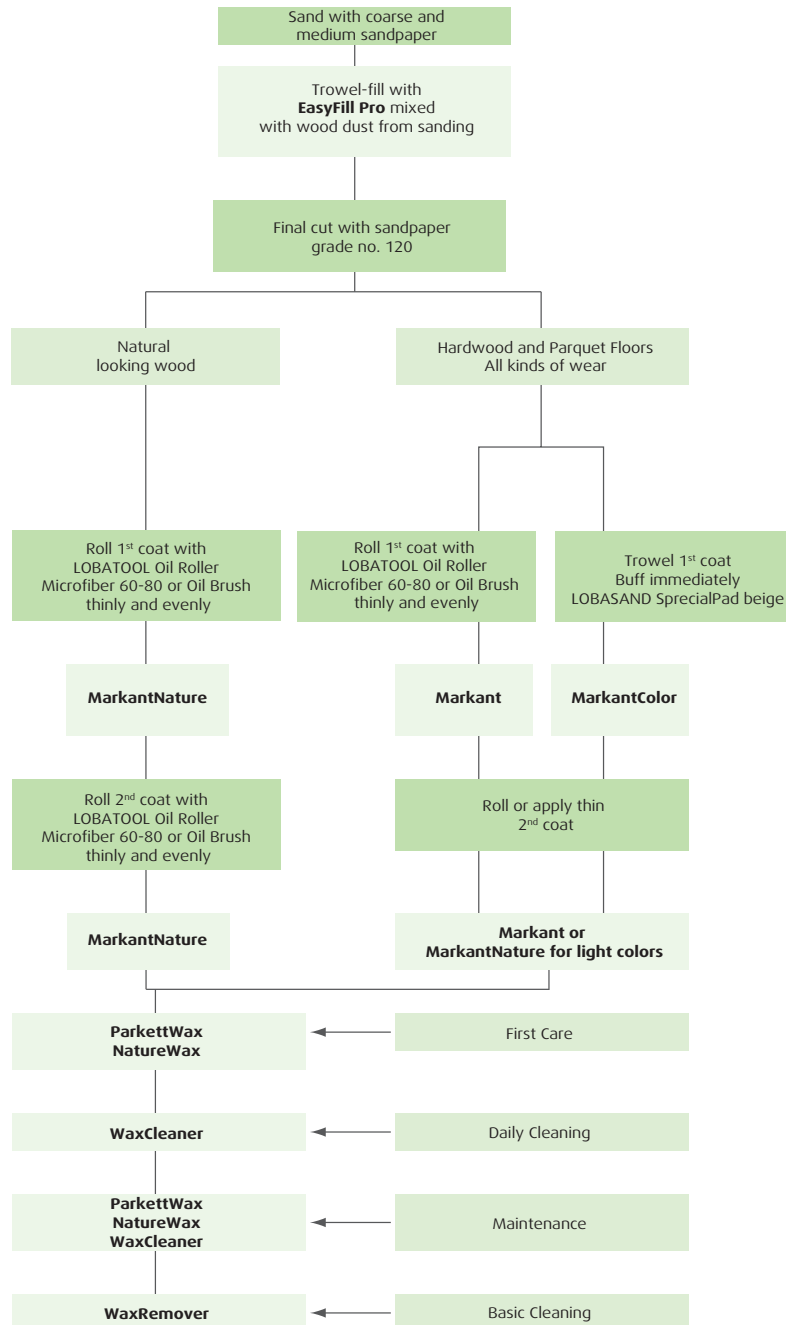


## Oils and oil/wax systems

For suitability of the individual alternatives for specific substrates and areas of application, see the respective technical application information.



<sup>4</sup>After drying for longer than 24 hours or after uneven appearance or matt-glossy areas, carry out intermediate sanding using sanding fleece and remove dust.

The LOBASOL oils, oil/wax systems mentioned do not have an edge-bonding effect.

For cleaning and care measures, see LOBA Care Instructions for Oiled Wood Floors.