



Slip resistance made easy!

LOBA is one of the pioneers in the development of slip-preventing sealants and oils for parquet and wooden flooring. The matt versions of varnishes from LOBA boast the slip prevention qualities of evaluation group R9. The addition of the SlipResist additive to the final sealing layer allows a certified slip prevention of R10 to be achieved on the surface without changing the properties of the varnish. This means you get the ideal slip prevention qualities (as per DIN EN 16165) for various areas of use!

The slip-preventing products from LOBA



R10

A slip-preventing surface of evaluation group R10 meets the requirements for floors in sanitary rooms and teaching kitchens in schools and kindergartens, for example. Floor coverings of evaluation group R10 are also recommended for barrier-free spaces.

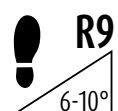
SEALING PRODUCTS + LOBA SLIPRESIST ADDITIVE	FLOOR TYPE
2K Supra A.T., semi-matt and matt	Wood, cork, linoleum, and PVC
2K Duo, semi-matt, matt and extra-matt	Wood, cork, linoleum, and PVC
2K Fusion, semi-matt and matt	Wood and cork
EasyFinish, semi-matt and matt	Wood and cork



OILS	FLOOR TYPE
Akzent 100 Oil	Wood
2K ImpactOil and Color variants	Wood
HardwaxOil EcoPlus	Wood
Markant and MarkantNature	Wood and cork



OUTDOORS	FLOOR TYPE
DeckOil and Color variants	Wooden decks
DeckFinish and Color variants	Wooden decks



R9

Slip-preventing parquet and wooden floorings from evaluation group R9 meet the requirements for public entrance areas, work areas, break and recreation rooms, company canteens, and similar areas, for example. The following LOBA sealing products are R9-certified:

SEALING PRODUCTS	FLOOR TYPE
2K InvisibleProtect	Wood
2K UltraElastic	Linoleum and PVC
2K FactoryStyle	Filler
2K Duo, semi-matt, matt and extra-matt	Wood, cork, linoleum, and PVC
2K Fusion, semi-matt and matt	Wood and cork



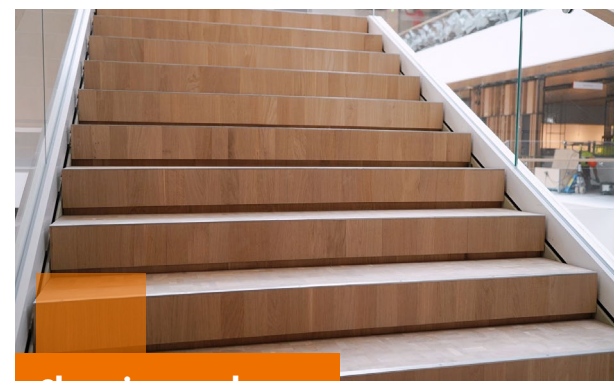
Art. No. 11018

Available in 100 g



Application

- Shake the LOBA SlipResist and varnish.
- Add it only immediately before application, once the hardener has been worked into the mixture.
- Add one 100 g container to 5 l/kg varnish.
- Caution: In order to guarantee the certified slip prevention, the amount of additive added must be precisely adhered to.
- Shake or stir thoroughly (can also be done using the LOBA varnish mixer).



Cleaning and care

SlipResist

LOBA SlipResist is a water-based additive for creating a slip-preventing surface of evaluation group R10 on various types of flooring. SlipResist is for water-based LOBA sealing products in matt versions. It can also be combined with other LOBA additives.

Why contractors are inspired

- R10 certified slip prevention
- All of the properties of the sealing products, such as soiling behavior, degree of shine, resistance, and resilience are preserved, even with the additive
- Solvent-free
- Simple and safe processing
- Can be combined with other LOBA additives
- Simplified storage

Range of use

All areas that require slip prevention of evaluation group R10. From sanitary and break rooms, entrance areas, and staircases all the way to service areas, kitchens, and kindergartens.

When used correctly and when dosed precisely, our cleaning and care products ensure consistent slip prevention properties. The floor covering should not be polished again after application. The slip-preventing effect of our products is regularly tested by external institutes.

Cleaner

Highly concentrated pH-neutral cleaner



Art. No. 10175-400000

Available in 1l and 10l

GISCODE GU73



FloorCare, Anti-Slip

Water-based dispersion care product



Art. No. 10490-400180

Available in 10l

GISCODE GE10



→ Please note the detailed technical information, processing instructions, setup recommendations, and test certificates.



Do you have any questions?
We look forward to hearing from you:

LOBA GmbH & Co. KG
Leonberger Strasse 56-62
71254 Ditzingen | Germany
Tel.: +49 7156 357-0
Fax: +49 7156 357-211
E-Mail: service@loba.de
www.loba.de

→ This flyer was printed on paper from sustainably managed forests and with bio-oil-based inks.