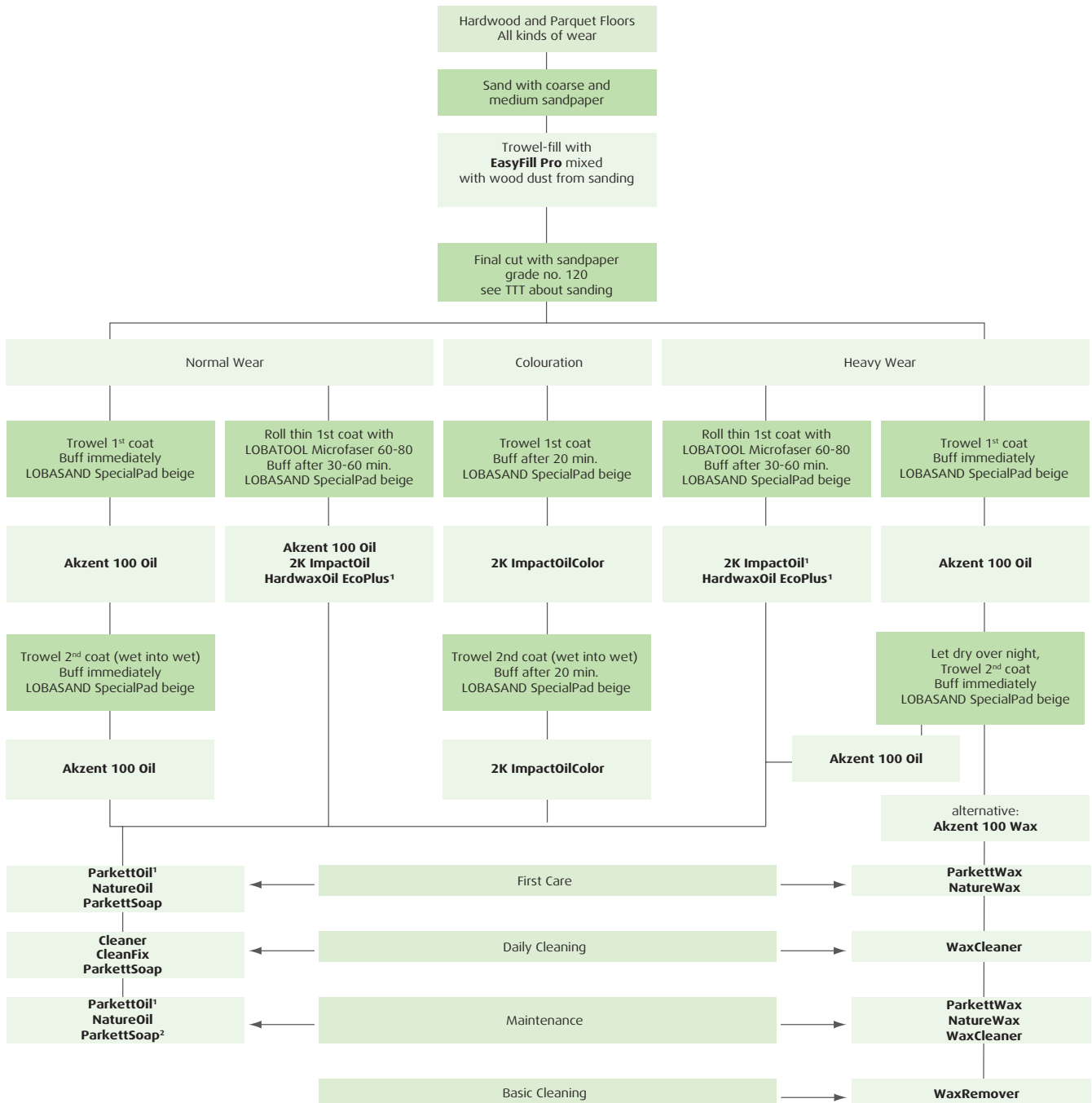


## High-solids systems

For suitability of the individual alternatives for specific substrates and areas of application, see the respective technical application information.



<sup>1</sup> Slip-resistant according to DIN51130

<sup>2</sup> Intensive cleaning 1:2 mixing ratio

<sup>3</sup> Single disc machine required

The LOBASOL® oils, oil/wax systems mentioned have no edge-bonding effect. For cleaning and care measures, see LOBA Care Instructions for Oiled Wood Floors.